

FOR LEASE
751 CHURCH STREET
ALLENTON, WI



751 Church Street presents a rare opportunity to lease highly visible retail space in the heart of Allenton, just west of I-41 with convenient access to Highway 33. The property offers strong regional connectivity, excellent frontage, and ample parking within a well-maintained multi-tenant retail center serving the surrounding Washington County trade area.

Current availabilities range from approximately 1,250 SF to up to 6,250 SF, including a former drive-thru endcap opportunity ideal for restaurant, coffee, retail, medical, or service-oriented users seeking strong accessibility and visibility. The center features masonry construction, municipal utilities, full HVAC throughout, sprinkler coverage, and monument signage visible to the I-41/SH33 Intersection.

Positioned within the B-1 Allenton Central Business District, the property benefits from a stable tenant mix and limited competing retail inventory in the immediate area, making it an attractive option for expanding retailers.

MICHAEL A. TESTA, CCIM
815-482-0105
MTESTA@HUNTER-RE.COM
HUNTER-RE.COM



PROPERTY DETAILS

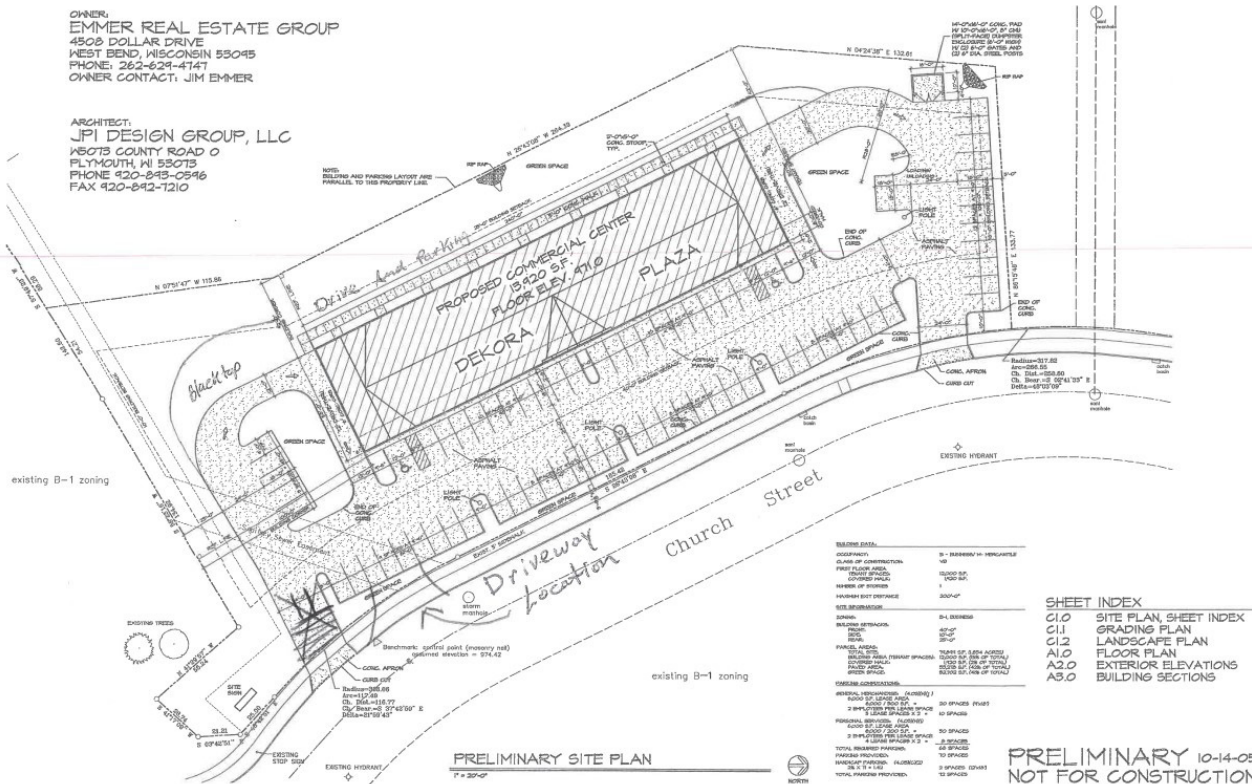
- Located conveniently right off of Hwy 33, just west of I-41
- Zoning: B-1 Allenton Central Business
- Construction: Masonry
- Sewer: Municipal / Water: Municipal
- Lighting: LED & Fluorescent
- Total SF: 12,000 SF
- Available SF: 1,250 SF - 6,250 SF
- Min Contiguous SF: 1,250 SF
- Max Contiguous SF: 6,250 SF
- Lot Size: 1.83 Acres
- Property Taxes: \$15,133.75 (2024)
- Lease Rate: \$11.00 PSF NNN
- NNN Expenses: Estimated to be \$3.82 PSF



SITE PLAN

OWNER:
EMMER REAL ESTATE GROUP
4505 DOLLAR DRIVE
WEST BEND, WISCONSIN 53095
PHONE: 262-624-4141
OWNER CONTACT: JIM EMMER

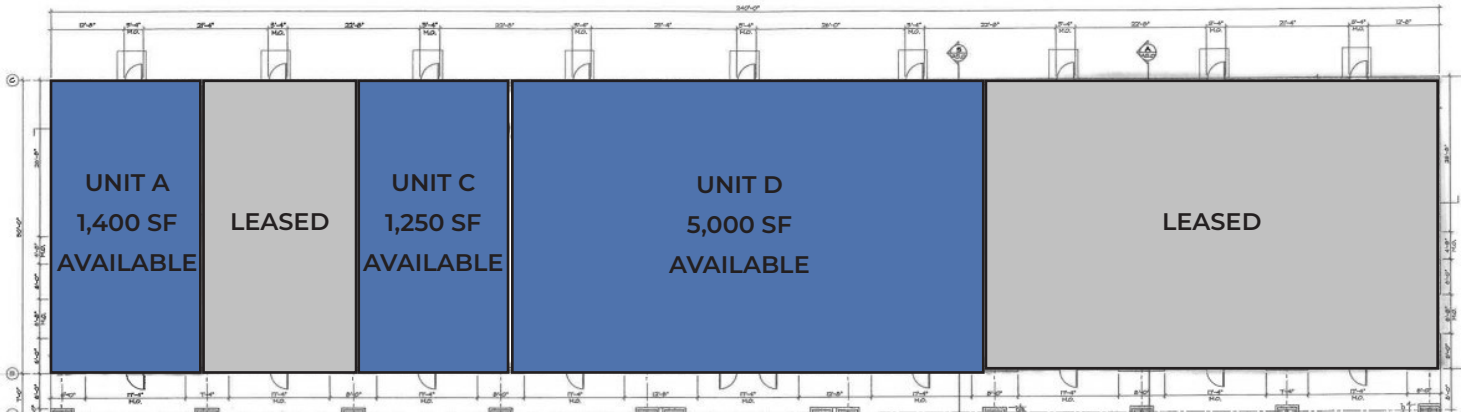
ARCHITECT:
JFI DESIGN GROUP, LLC
4805 COUNTY ROAD O
PLYMOUTH, WI 53075
PHONE: 920-843-0946
FAX: 920-842-7210



MICHAEL A. TESTA, CCIM
815-482-0105
MTESTA@HUNTER-RE.COM
HUNTER-RE.COM



FLOOR PLAN



AVAILABLE SPACE				
Unit	Size	Rate	Availability	Special Feature(s)
A	1,400 SF	\$11.00 PSF NNN	Currently Available	Existing Drive Thru
C	1,250 SF	\$11.00 PSF NNN	30 Days	
D	5,000 SF	\$11.00 PSF NNN	60 Days	Full Gym Buildout



DEMOGRAPHICS

Population	5,646
Households	2,076
Median Household Income	\$120,024

TRAFFIC COUNTS

Street	Visitors Per Day
Highway 33	11,700
I-41	35,300

MICHAEL A. TESTA, CCIM
 815-482-0105
 MTESTA@HUNTER-RE.COM
 HUNTER-RE.COM



STATE OF WISCONSIN | DISCLOSURE TO CUSTOMERS

Prior to negotiating on your behalf the brokerage firm, or an agent associated with the firm, must provide you the following disclosure statement:

DISCLOSURE TO CUSTOMERS

You are a customer of the brokerage firm (hereinafter Firm). The Firm is either an agent of another party in the transaction or a subagent of another firm that is the agent of another party in the transaction. A broker or a salesperson acting on behalf of the Firm may provide brokerage services to you. Whenever the Firm is providing brokerage services to you, the Firm and its brokers and salespersons (hereinafter Agents) owe you, the customer, the following duties:

- (a) The duty to provide brokerage services to you fairly and honestly.
- (b) The duty to exercise reasonable skill and care in providing brokerage services to you.
- (c) The duty to provide you with accurate information about market conditions within a reasonable time if you request it, unless disclosure of the information is prohibited by law.
- (d) The duty to disclose to you in writing certain Material Adverse Facts about a property, unless disclosure of the information is prohibited by law. (See Definition of Material Adverse Facts below).
- (e) The duty to protect your confidentiality. Unless the law requires it, the Firm and its Agents will not disclose your confidential information or the confidential information of other parties.
- (f) The duty to safeguard trust funds and proposals in an objective and unbiased manner and disclose the advantages and disadvantages of the proposals. other property held by the Firm or its Agents.
- (g) The duty, when negotiating, to present contract proposals in an objective and unbiased manner and disclose the advantages and disadvantages of the proposals.
- Please review this information carefully. An Agent of the Firm can answer your questions about brokerage services, but if you need legal advice, tax advice, or a professional home inspection, contact an attorney, tax advisor, or home inspector. This disclosure is required by section 452.135 of the Wisconsin statutes and is for information only. It is a plain-language summary of the duties owed to a customer under section 452.133(1) of the Wisconsin statutes.

CONFIDENTIALITY NOTICE TO CUSTOMERS

The Firm and its Agents will keep confidential any information given to the Firm or its Agents in confidence, or any information obtained by the Firm and its Agents that a reasonable person would want to be kept confidential, unless the information must be disclosed by law or you authorize the Firm to disclose particular information. The Firm and its Agents shall continue to keep the information confidential after the Firm is no longer providing brokerage services to you.

- The following information is required to be disclosed by law:
 1. Material Adverse Facts, as defined in Wis. Stat. § 452.01(5g) (see "Definition of Material Adverse Facts" below).
 2. Any facts known by the Firm or its Agents that contradict any information included in a written inspection report on the property or real estate that is the subject of the transaction.

To ensure that the Firm and its Agents are aware of what specific information you consider confidential, you may list that information below. At a later time, you may also provide the Firm or its Agents with other Information you consider to be confidential.

CONFIDENTIAL INFORMATION: _____

NON-CONFIDENTIAL INFORMATION (the following information may be disclosed by the Firm and its Agents): _____

(Insert information you authorize to be disclosed, such as financial qualification information.)

THIS IS A DISCLOSURE AND DOES NOT CREATE A CONTRACT. THIS DISCLOSURE IS TO BE PROVIDED BY AN AGENT ASSOCIATED WITH A LISTING FIRM OR WITH A SUBAGENT FIRM PROVIDING BROKERAGE SERVICES TO A BUYER OR TENANT.

DEFINITION OF MATERIAL ADVERSE FACTS

A "Material Adverse Fact" is defined in Wis. Stat. § 452.01(5g) as an Adverse Fact that a party indicates is of such significance, or that is generally recognized by a competent licensee as being of such significance to a reasonable party, that it affects or would affect the party's decision to enter into a contract or agreement concerning a transaction or affects or would affect the party's decision about the terms of such a contract or agreement.

An "Adverse Fact" is defined in Wis. Stat. § 452.01(1e) as a condition or occurrence that a competent licensee generally recognizes will significantly and adversely affect the value of the property, significantly reduce the structural integrity of improvements to real estate, or present a significant health risk to occupants of the property; or information that indicates that a party to a transaction is not able to or does not intend to meet his or her obligations under a contract or agreement made concerning the transaction.

NOTICE ABOUT SEX OFFENDER REGISTRY

You may obtain information about the sex offender registry and persons registered with the registry by contacting the Wisconsin Department of Corrections on the Internet at <http://www.doc.wi.gov> or by telephone at 608-240-5830.